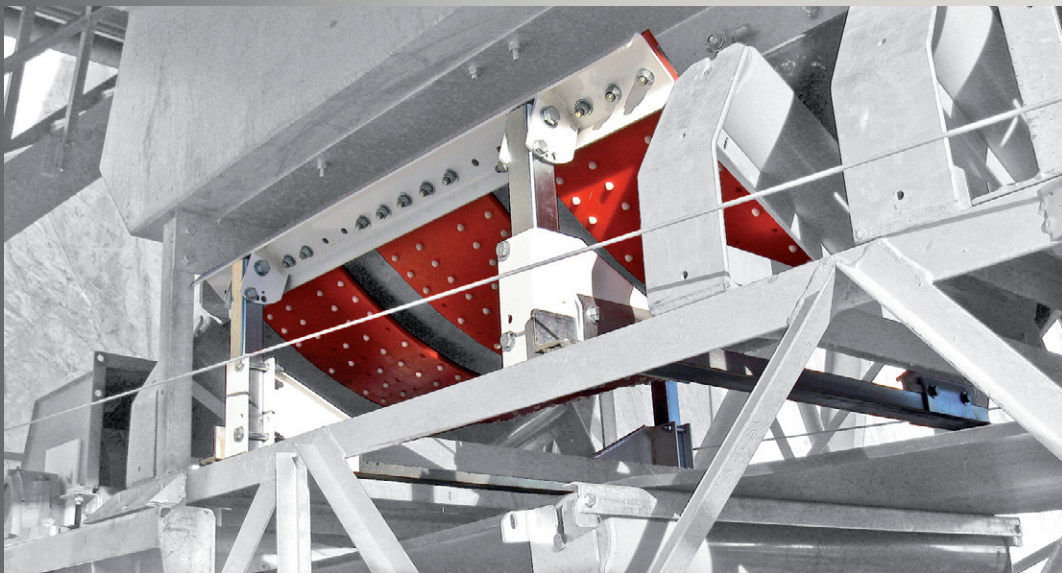


SHOCK-ABSORBING TROUGHS FOR CONVEYOR BELTS





The patented **FLEXAL**[®] system provides an ideal solution to the problem of punching on the belt in reception areas.

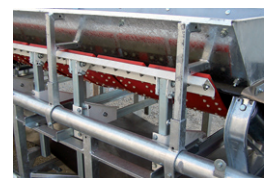
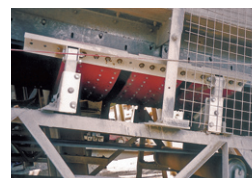
Equipped with polyurethane straps with high mechanical characteristics, the adjustable trough **FLEXAL**[®] constitutes an elastic mattress providing excellent direct damping; low friction pads assist the sliding of the belt over the straps.

FLEXAL[®] troughs have the following advantages:

- Quick and easy installation on all conveyors for troughs adjustable from 20 to 70°.
- Significant increase in belt life due to the unique potential of the shock absorbing straps.
- Reduction in the cost of maintaining the conveyor and its environment.
- Improved safety.

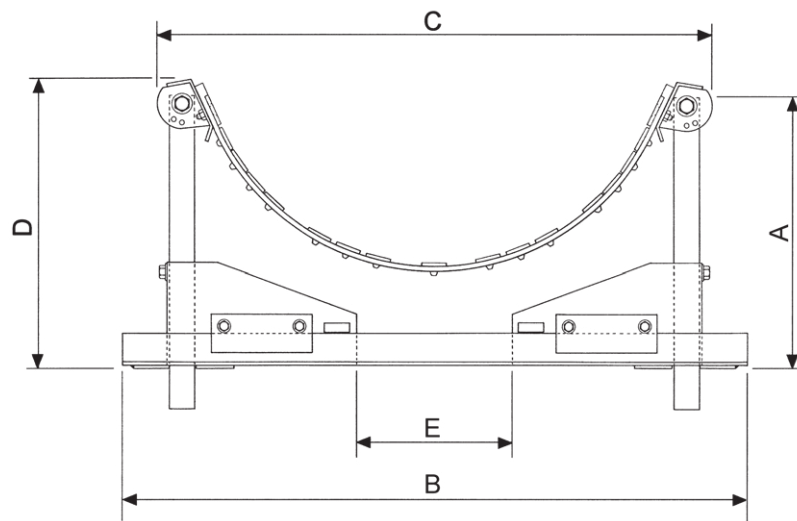
But also:

- Permanent visibility of the operation and condition of the straps that can easily be reconditioned or replaced.
- Improved sealing.
- Equipment available with strengthened white straps for very severe applications.

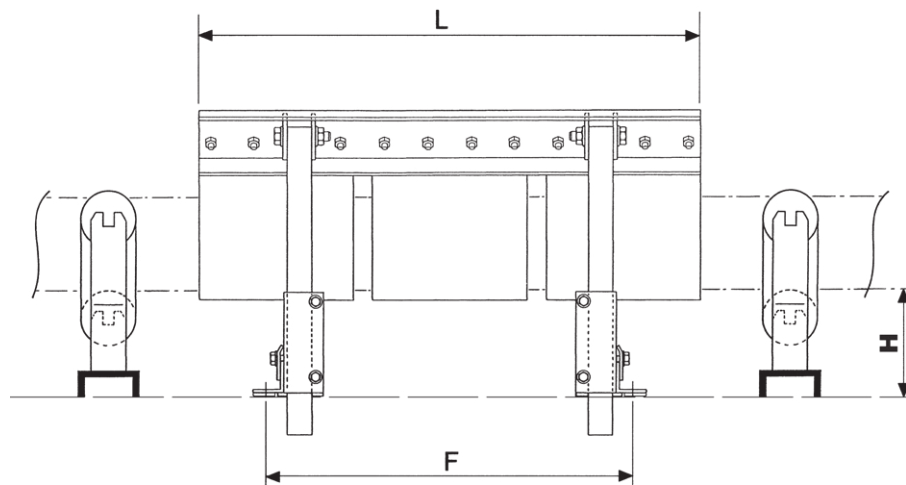


SHOCK-ABSORBING TROUGHS

- The number of straps is determined taking into account the following criteria:
 - The nature and size of the material
 - The drop height
 - The length of the impact zone
 - The speed of the belt
 - The hourly flow
- A questionnaire is available for all requests for recommendations.
- Special assemblies – consult us.



A: Dimension to be cut if necessary.



H: Height of the centre roller in relation to the chassis.

PRECAUTIONS FOR USE

- The **FLEXAL**® trough must always be mounted in the middle of the impact zone between two identical roller stations so that there is continuity in the shape of the trough.
- The trough transition must be made between the drum and the station preceding the **FLEXAL**® trough.
- The **FLEXAL**® cannot be fitted to a conveyor performing the function of an extractor.
- Conveyor belts must be free of metal staples and severe damage to the bottom coating.

SHOCK-ABSORBING

AR1 650 / 800 TROUGH

	Trough	C	D	Straps	Weight
BT 650 mm	20°	930	H+130	2 to 3 straps 250x7	2s : 45 kg
	30°	890	H+180		3s : 49 kg
	45°	820	H+235	28 Pl. Th 6	
BT 800 mm	20°	1080	H+145	2 to 3 straps 250x10	2s : 46 kg
	30°	1035	H+205		3s : 51 kg
	45°	935	H+280	32 Pl. Th 6	
	70°	755	H+355		

L : 810 F : 600 B : 1150

Mounting holes: 3 x 2 oblong holes 17x34
centre distances: 716, 878 et 1040 mm

AR2 1000 / 1200 TROUGH

	Trough	C	D	Straps	Weight
BT 1000 mm	20°	1310	H+145	2 to 4 straps 300x12	2s : 85 kg
	30°	1255	H+225		3s : 94 kg
	45°	1170	H+305	43 Pl. Th 8	4s : 104 kg
	70°	990	H+410		
BT 1200 mm	20°	1495	H+175	2 to 3 straps 360x14	2s : 94 kg
	30°	1455	H+250		3s : 106 kg
	45°	1320	H+365	57 Pl. Th 8	
	70°	1100	H+475		

L : 1200 F : 910 B : 1600

Mounting holes: 2 x 2 oblong holes 17x34
centre distances: 1240 and 1440 mm

AR3 1000 / 1600 HEAVY TROUGH

	Trough	C	D	Straps	Weight
BT 1000 mm	30°	1290	H+220	4 to 6 straps 300x12	4s : 193 kg
	45°	1170	H+320	43 Pl. Th 8	5s : 202 kg 6s : 211 kg
BT 1200 mm	30°	1480	H+250	4 to 5 straps 360x14	4s : 203 kg
	45°	1345	H+350	57 Pl. Th 8	5s : 222 kg
BT 1400 mm	20°	1775	H+210	3 to 4 straps 480x16	3s : 225 kg
	30°	1715	H+310		4s : 249 kg
	45°	1550	H+430	94 Pl. Th 8	
BT 1600 mm	20°	1960	H+230	3 to 4 straps 480x16	3s : 233 kg
	30°	1885	H+350		4s : 259 kg
	45°	1700	H+485	108 Pl. Th 8	

L : 1920 F : 1290 B : 1900

Mounting holes: Not provided, to order.

BELLE BANNE

ROLLAX

SPILL-EX

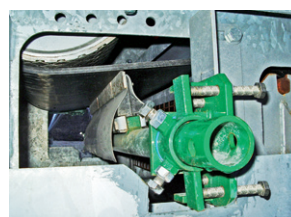
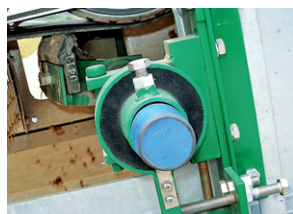
FLEXAL

ACMAN

CENTRAX

SEALTEK

EXCALIBUR



DISTRIBUTOR :

REGIONAL REPRESENTATIVE:



14, rue de l'Industrie Zone Ind.
F - 33500 LIBOURNE
TÉL. : + 33 (0) 5 57 51 87 89
access.bt@hamsa.fr